



# ATERNIS

FOOD FLATBED PRINTER



USER MANUAL

**Thank you for choosing!**

If you have any questions, please contact  
<https://mprint-dtg.com>

## Precautions

*Do not use the unit in dusty, damp, explosion- and fire-hazardous areas with faulty wiring.*

*Do not connect the device to a power supply network with parameters other than those specified.*

*The device must be connected to the mains with grounding and stable parameters specified in the specification. Use a stabilizer and normalizer for networks with poor characteristics.*

*It is forbidden to disassemble, hit, turn the device upside down. Repairs should only be carried out by qualified personnel.*

*Do not insert, pour objects or liquids other than those specified in this manual.*

*It is forbidden to push the table manually or touch it while the device is moving and turned on.*

*The device is equipped with a visible spectrum (red) Laser emitter. Do not look at the source or place any object that could reflect the beam. Keep children away from the device during operation.*

*Not for children under 16 years of age.*

# Specification

- Print area dimensions: **30x42 cm**
- Maximum height of the product to be printed: **160 mm**
- Number of colors: **4 colors (CMYK)**
- Ink pumping: **manual, automatic**
- Device maintenance: **not required**
- Workplace dimensions (WxH): **65x80 cm**
- Power supply: **230V 50/60Hz 70W**

# Supply kit

- Power cord with grounding, 1 pc
- USB cable, 1 pc
- User manual, 1pc

# Description

**MPrint Aternis** is an automatic digital printing device of tablet type, which prints directly on the product (direct printing) by applying liquid edible ink on the upper surface.

The device is ready to print with edible ink on various confectionery products: cookies, gingerbread, cakes, pancakes, chocolate, edible paper, etc.

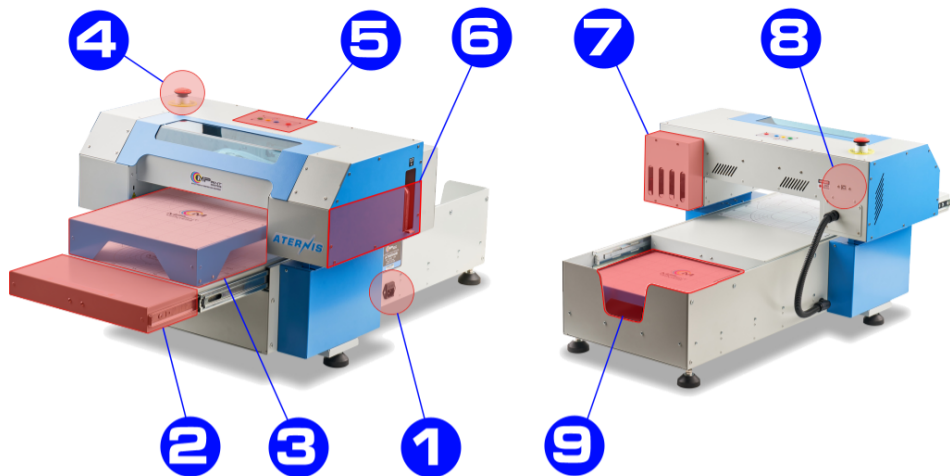
The main requirement for the product is a flat top surface. The height difference (irregularities) up to 5-7mm is allowed.

The printer is equipped with a laser level and can automatically adjust the height of the table to obtain the best quality printed image. The laser level is also used to protect the printer from damage.

The device consists of the following main parts:

1. The mains power connector
2. Movable table
3. Gingerbread stand
4. Emergency stop
5. Control panel

6. Ink tanks
7. Used ink tank
8. USB cable connection
9. Space for gingerbread stand



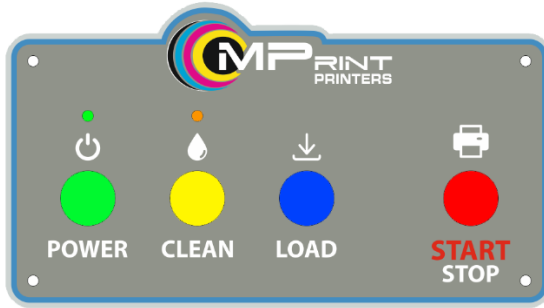
On the front panel at the bottom of the printer is the main power switch.

Compartment 7 contains the waste ink tank. By unscrewing the 4 screws, you can reach the bottle in the compartment.

The emergency stop is on when pressed. In this case, the device will not turn on. To release the emergency stop, turn the red part clockwise.

The gingerbread stand 3 can be stowed in the special storage recess 9 when not in use.

***To carry the device, do not grasp the sliding table, the top of the printer or the side trim of the elevators! Only grasp the bottom of the device from the front and rear.***



The printer control panel has 4 buttons:

1. Power
2. Clean
3. Load
4. Start/Stop

And also 2 light indicators:

1. Power (green)
2. Status (orange or yellow)

## Initial startup

After unpacking the device, check the integrity of the case and components. There should be no visible damage.

Place the device on a flat horizontal surface. The device should stand firmly, it should not wobble or sag.

Gently, slowly and without effort move the sliding table back and forth. Make sure that the table can move freely and that there is no damage during transportation.

Make sure the waste ink reservoir is in place and the tube is pointing into it.

Make sure the ink block on the side hangs securely on the side cover. There is a valve switch on the front of the unit. Move the lever from the transport position to the operating position by turning it 180 degrees.

Set the power switch to the “0” - Off position. Plug the power cord into the side of the unit. Set the power switch on the front panel to the “1” position - On.

When the power is turned on, a short beep will sound and both LEDs will light up for one second.

Press the Power button and the unit will begin the power up and initialization procedure. The sliding table will start moving towards the rear end point. The Power light will start flashing.

There may be objects on the moving table during initialization, so when the table is moved backwards, if the laser level is crossed by anything, the printer will automatically start to rise so that the object on the table is guaranteed to fit into the gantry of the device. If the object on the table is higher than the maximum height allowed for the device, the printer will rise to the highest point and initialization will be aborted because there is a tall object on the table. If there is no object on the table at power-up but the printer rises to the maximum height, then refer to the troubleshooting section of the manual.

Once the moving table has finished initializing, the printer's print unit will begin initializing. The carriage will move left and right. If the printer has not been used for a long time or if there have been any hardware errors before this initialization, the printer may automatically start the print head cleaning procedure. Simply wait for this procedure to complete.

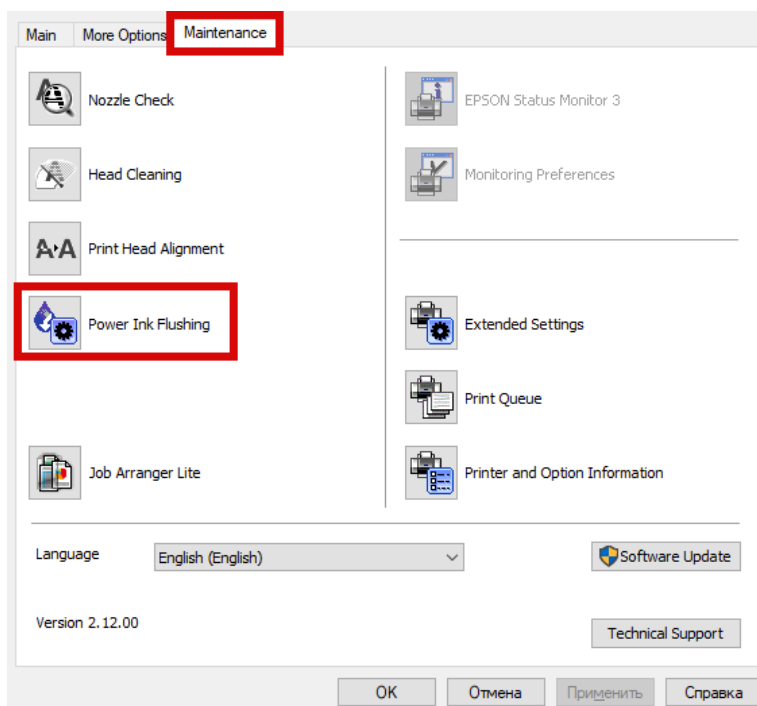
Once the printer has been turned on, the green "Power" LED will remain lit and a beep will sound to indicate that the printer is ready for use.

It is now necessary to refill the ink tanks with food grade ink. To do this, close the valve on the reservoir block, remove the block from the side cover and set it aside. Be careful with the tubes!

Open the filler necks and fill the ink reservoirs by color: Yellow, Cyan, Magenta, Black, Black. Close the filler necks, hang the unit on the side cover and open the valve.

Now you can proceed to install the device drivers with the operating system (see Computer Setup).

After that, in the device driver you need to start the procedure of filling the CISS with ink. To do this, go to Maintenance and select Power Ink Flushing:



Follow the instructions. The device will begin the procedure to pump ink into the system. This may take quite some time.

When the ink pumping is complete, the device will be ready for use.

## Turn on

To turn on the device, plug in the power cord and turn the power switch to the “1” position. Press the “Power” button.

After initialization, the “Power” indicator lights up.

During initialization, the sliding table always starts to move backwards, if it does not or if extraneous sounds are heard, then turn off the power and refer to the problem solving section of the manual.

If a second indicator besides the green “Power” light flashes or is lit continuously during device initialization, press the “Power” button to turn off the device. Check and delete all print jobs, and try powering up again. If this does not work, refer to the problem solving section of the manual.

The laser level is always used when moving backwards.

## Turn off

After finishing work with the device, press the “Power” button, wait until the “Power” indicator goes out and then turn off the power with the switch to position “0”.

***Attention!** Always turn off the device with the “Power” button, not with the power switch.*

## Operating Procedure

To work the device must be filled with ink, power cord, USB cable is connected, software is installed on the computer.

After turning on the device, the sliding table is in the middle position - parking position. Press the “Load” button to move the table to the loading position or again to move it back to the parking position.

With the table in the loading position, place a sheet of food grade paper on the table, and lay out the items to be printed. Note that the sheet of paper should not slide freely across the table to avoid shifting during printing and subsequent rejects.

Once the products have been placed on the moving table, press the “Start/Stop” button. A beep will sound, the “Power” indicator will flash and the table will start to move backwards, scanning the level of the top of the products, the printer may rise as required during this process. If you need to interrupt the operation at this point, press the “Start/Stop” button. The table will stop. Press the “Load” button to move to the load position.

When the table is fully backed into the start position, a beep will sound and the “Power” indicator will blink slowly. Press “Start/Stop” to cancel.

The printer is ready to print. Send the image from the computer to print. Printing will start and a beep will sound. During printing, the table will move in synchronization with the image being printed. When printing is complete, the table will fully extend to the loading position, a beep will sound, and the “Power” indicator will light steadily. Printing is finished.

If you want to cancel printing during printing, press the “Start / Stop” button.

A situation may arise when an image has been sent for printing from a computer, but the device is not ready for printing. For example, when printing several copies of an image. In this case, when you send a table of products to print, the product will automatically start the printing process. In this way, you can print many copies of the same image by continually stacking new products and sending the table to print.

Two options are recommended to ensure that the image hits the product evenly. The first option is to use the grid printed on the moving table and use templates in programs with the same grid. This option is quick, but may not be accurate enough. The second option is to put a blank piece of food paper and make a print on it. You can print the whole picture or just the outline of the image. Then put the items to be printed on that sheet. This method is the easiest and most accurate.

## **Software installation**

In order to use the product for printing, you must have a computer and the product driver installed on it. The product uses Epson printheads, so installation of the appropriate drivers is required.

The driver installation and configuration procedure for Windows users is described below. Apple computer users use

the standard print driver that is available in the operating system.

Before starting this section, the device must be turned on with only the “Power” LED lit. After that, download the driver from the official Epson website: [www.epson.eu](http://www.epson.eu). On the site you need to choose Support in the main menu, select **L1300**:

Search by Product Name

Q | L1300 Search

Epson L1300

Epson ER-L1300L

From the list that appears, select L1300. Go to the product page.

Operating System: Windows 10 64-bit (Detected) Language: English Go

Attention: Your operating system may not be detected correctly. It is important that you manually select your Operating System from above to ensure you are viewing compatible content.

Downloads 3 FAQs Manuals & Documentation Registration & Warranty Options Contact Us 1 2

Product Setup -

Epson Software updater (v4.6.7.0) +  
v4.6.7.0 | 11-Apr-2024 | 5.67 MB | exe

Drivers - 4

Driver (v2.1) - 5  
v2.1 | 02-Jul-2014 | 29 MB | exe

Download ▶

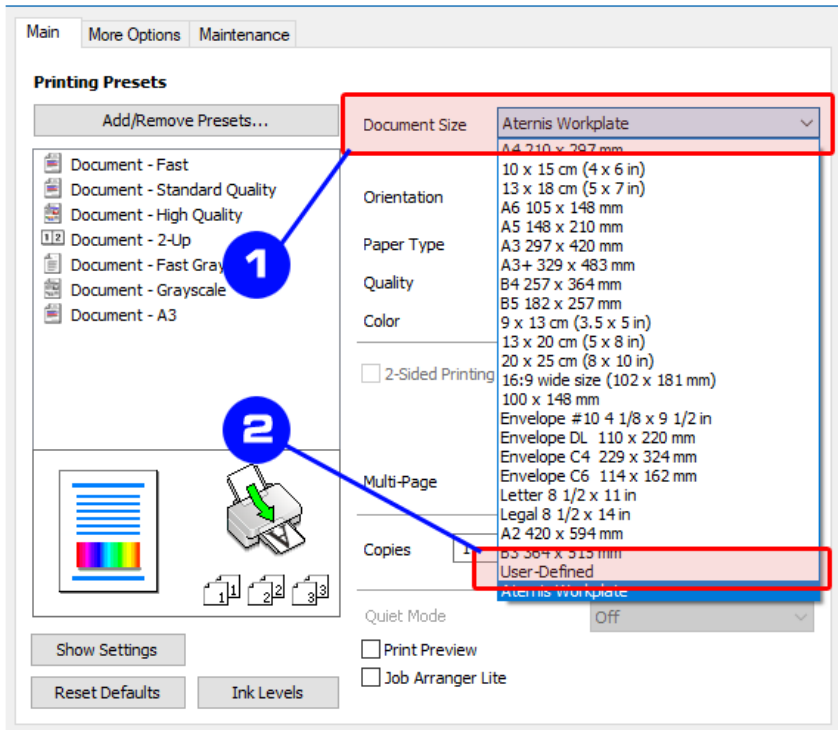
The page with the selected model will open. Go to the Drivers tab, specify your operating system and preferred driver language.

Click the Download button below the page:

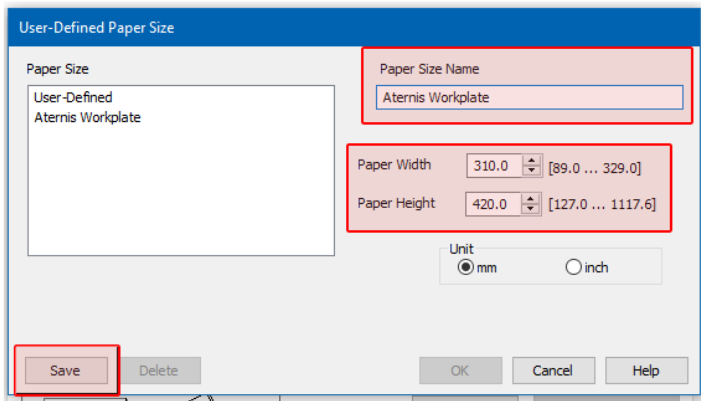
After downloading, start the installation procedure. Follow the instructions. At some point, the installer will ask you to connect the printer to your computer. Connect using a USB cable and complete the installation procedure.

Once the installation is complete, the driver and printer will be ready, but additional settings will be required for high quality printing. To do this, go to the driver settings:

1. Press Win+R
2. Type “control printers”
3. In the window that opens, locate “EPSON L1300 Series” and right-click the mouse
4. Select “Print Settings”



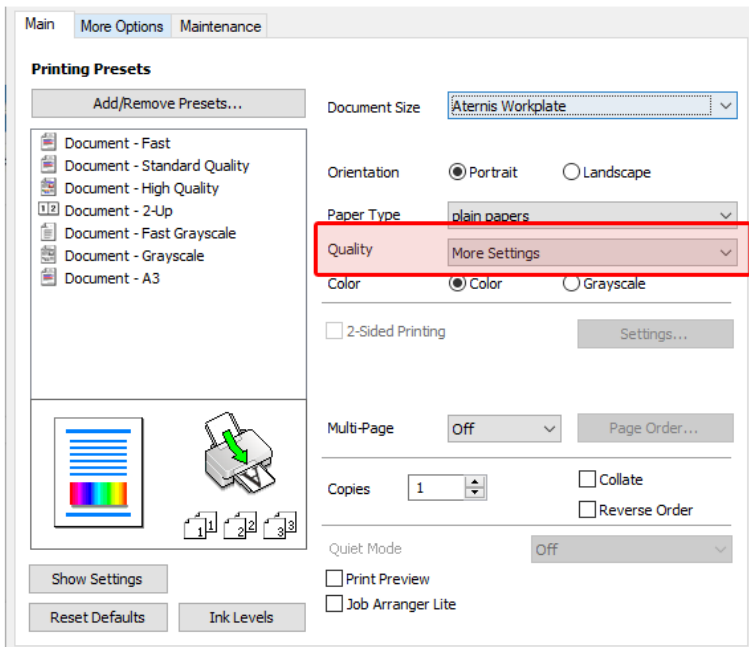
The Customize Settings window will appear. In this window, select Document Size as User-Defined. This will open a new window for creating a custom format:



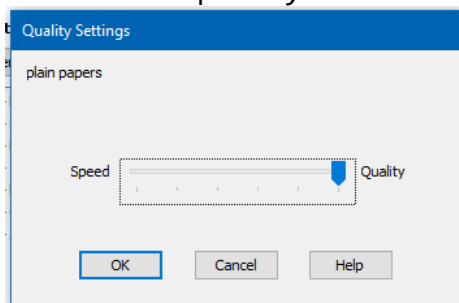
1. Enter the name of the format
2. Enter the dimensions of the workspace
3. Click Save and then OK.

Make sure that the created format is selected in Document Size.

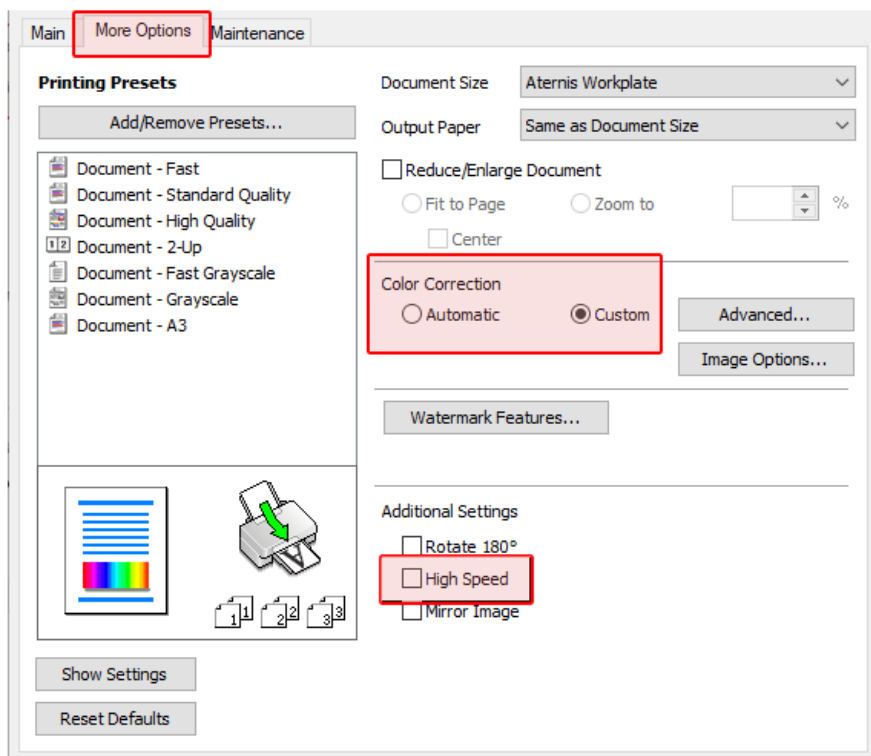
Next, select the print quality:



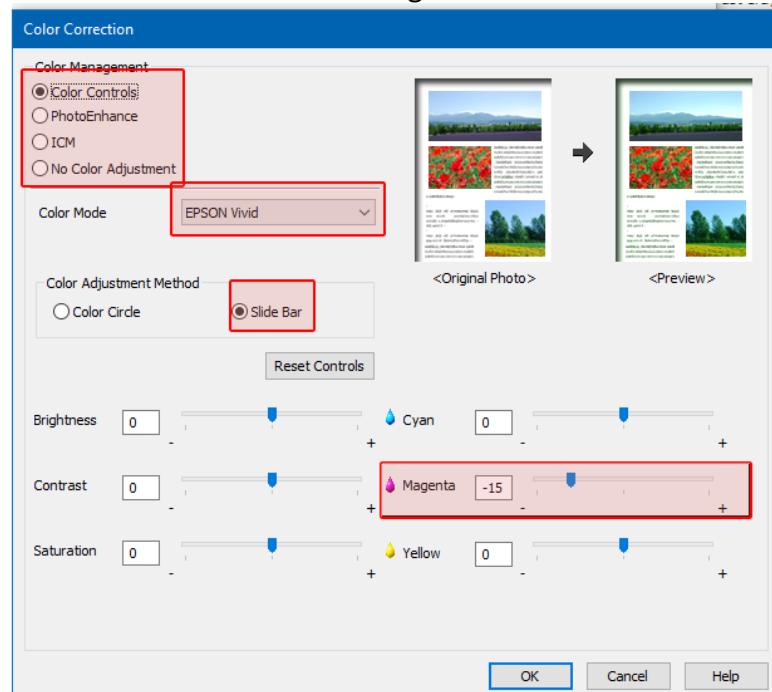
Select More Settings, a window will appear and in it move the slider towards maximum quality and click OK:



Go to the driver's More Options tab and deselect High Speed. Color Correction should be selected as Custom:



Click the Advanced button. In the window that appears, you can manually adjust the color rendering to the ink and surface. The recommended settings are shown below:



## Maintenance

Keep the unit clean and in a dry place. After use, wipe the sliding table with a soft, damp cloth. If not used for a long period of time, pull out the power cord.

There should be no extraneous sounds or noises during operation. If there are any, contact customer service.

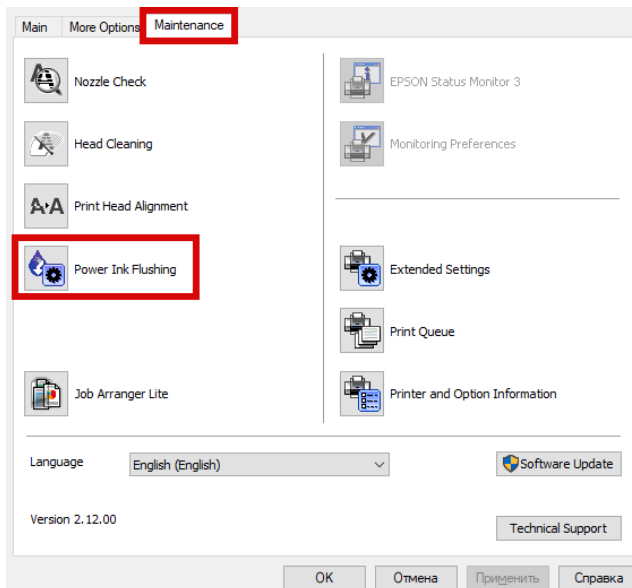
During operation, the printer performs periodic automatic cleaning. During this process, the pump turns on and pumps ink through the printheads. The pumped ink is waste ink and is discharged into a special container. Therefore, you should monitor the level of this ink and empty the tank periodically.

This device uses Epson printheads that use piezoelectric drop ejection technology, so the condition for operation is the presence of liquid inside. In its absence, the printing elements will overheat and fail. In this regard, the device should always be refilled with ink, if used.

To fill the device's SNHR, it must be plugged in and the power switch must be in the “1” position. The product must be in standby mode. If the green “Power” indicator light is on. The valve switch on the ink block is in the open position, so before refueling you need to close it by turning it 180 degrees.

Remove the unit from the side cover, hinge it to its side. Now open the ink reservoirs and pour the ink. After refueling, you need to close the covers, hang the unit on the wall and open the valve.

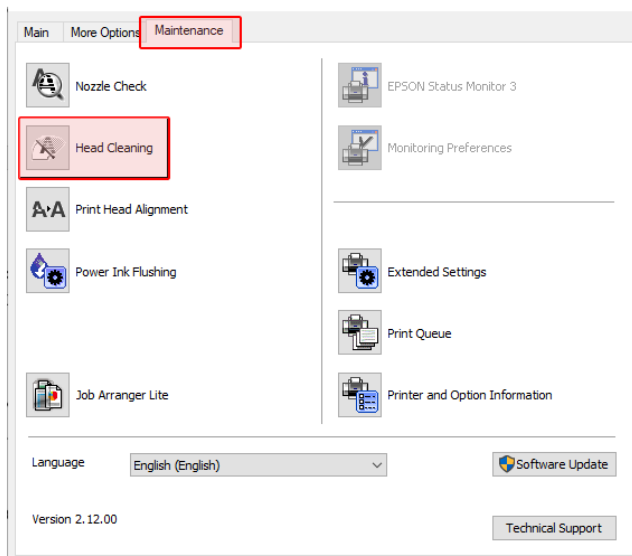
When the unit is turned on for the first time, it does not contain any liquids in the ink supply system, so you need to do the process pumping of ink through the device driver:



During operation, the underside of the printheads may become dirty and the ink may dry on the outside. This may

cause the print quality to deteriorate, especially on fine details or solid colors - the pattern will be streaked. To correct this, press the “Clean” button and hold it down until you hear a beep. The device will begin the printhead cleaning procedure. The green “Power” light will blink. Wait for the procedure to complete before you start printing.

You can also start printhead cleaning from the device driver:



In the driver, under Maintenance, select Head Cleaning and follow the program instructions.

Only clean the print head if the image quality is poor, as this procedure wastes ink.

If transportation of the product is required, close the ink supply valve on the unit, empty the waste ink tank, and make sure that the ink tanks are closed.

If the unit is to be shipped by shipping companies, be sure to drain the ink tanks to prevent ink spillage when the unit is turned over.

The movable table cannot be moved by hand when the device is switched on, but it may happen that the table was

moved during operation. In this case, the device must be reinitialized, i.e. the power must be turned off and on.

Remember that it is unacceptable to turn off the power with the switch. Use the “Power” button and wait until the green “Power” indicator goes out.

## **Troubleshooting**

The device has several ways to indicate which error has occurred. Some errors can be resolved by the user, but some require a service technician.

Errors fall into two categories: those related to the moving table and those related to the printheads and system.

Possible sliding table errors and how to solve them.

### **1. The table does not move when the unit is turned on.**

The power switch should light up after the unit is turned on. If it does not light, check the fuse in the power connector.

If the Power light is blinking but the table does not move, then turn off the power and move the table with your hands. It should move without any stuttering or jerking.

If this does not solve the problem, contact customer service.

### **2. When you turn on the device, the printer rises fully upward**

This error is caused by a problem with the laser level.

Check for dirt on the holes in the laser beam housing at the front of the unit. If there is no visible problem, contact support.

### **3. Printing on sugar paper or wafer paper leaves dirty streaks and smudges.**

When printing on edible paper, especially wafer paper, it deforms due to moisture from the ink. Given that the gap between the printheads and the product is small, a very slight deformation of the paper sheet will cause the bottom of the printheads to be caught and, as a result, the surface of the sheet will become dirty.

To avoid this problem, after pressing the “Start/Stop” button, when the moving table has passed the laser level, briefly cover the laser level with your finger or other object. This will raise the printer slightly and ensure that the gap between the heads and the sheet is increased.

Note that too much clearance will severely affect image quality.

#### **4. Spots and blotches may occur when printing on products**

This is caused by the formation of ink droplets on the bottom of the print head due to a foreign object or small protrusions on the product that could not be detected by the laser level due to their size.

If this happens, clean the printhead via the device driver or the “Clean” button.

If the products have small protrusions that are not detected by the laser level, close the laser level for a short moment when moving the table to start printing. This will increase the gap slightly and the printhead will not hit these protrusions.

#### **5. Two indicators “Power” and “Clean” flash at the same time when the unit is turned on or during operation**

Both LEDs blinking at once indicates a device error. This may be caused by incorrect driver settings. Therefore, the first thing to do is to delete all print jobs and check the document size settings.

If the print queue is empty and the settings are all normal, then check that the carriage moves freely left-to-right when the device is turned on.

If all parts are working without visible damage, then contact support.

If this error occurs, the unit can be turned off with the “Power” button.

#### **6. The table works normally, but the “Clean” indicator is constantly lit when printing**

This signals that there is a print job, but the table is not ready to print. Clean the print queue or send the table with products to print with the “Start / Stop” button.

### **7. During printing, the heads hit the product**

The device is equipped with a laser level, but this situation is possible when working with the device. In this case, the print head cleaning must be started.

If the print head has hit the product hard enough or if you cannot achieve good print quality after cleaning, contact customer service.

If your problem is not described in this section, contact support with a description of the situation, the actions that were taken, and any other information that may be helpful in resolving the problem.